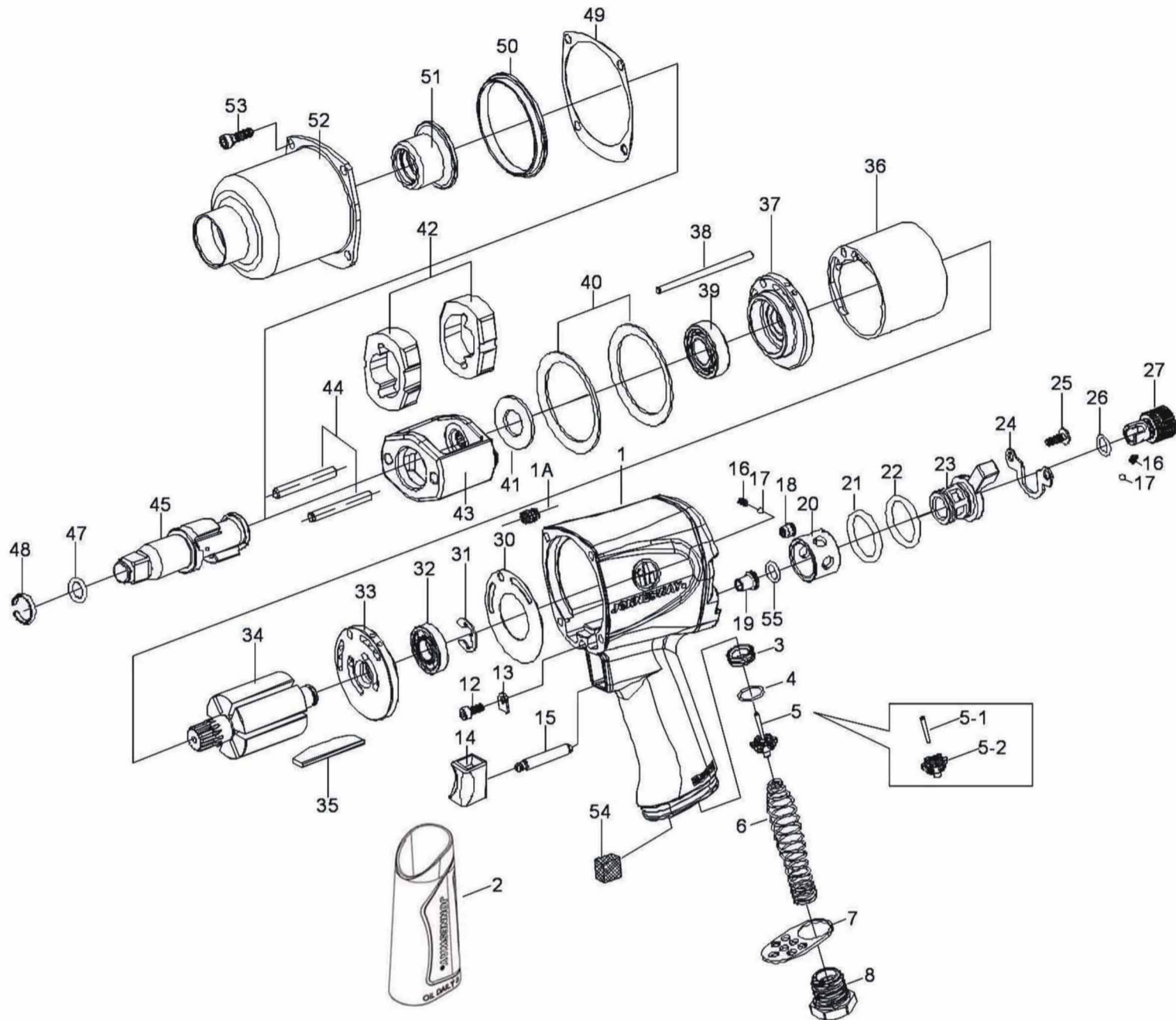


1/2" SQ. DR. HEAVY-DUTY IMPACT WRENCH

ITEM NO.: JAI-1044



NO.	PART NO.	DESCRIPTION	Q'TY	NO.	PART NO.	DESCRIPTION	Q'TY
★ 1	JAI-1044-1	HOUSING ASSEMBLY { INCL.1A.2.18.19 .20.26 (1) }	1	30	JAI-1044-30	GASKET	1
● 1A	JAI-1044-1A	HELI-COIL	4	31	JAI-1044-31	RETAINER	1
● 2	JAI-1044-2	RUBBER GRIP	1	32	JAI-1044-32	BALL BEARING	1
3	JAI-1044-3	THROTTLE VALVE SEAT	1	33	JAI-1044-33	REAR END PLATE	1
4	JAI-1044-4	O-RING	1	34	JAI-1044-34	ROTOR	1
★ 5	JAI-1044-5	THROTTLE VALVE ASSEMBLY (INCL.5-1.5-2)	1	35	JAI-1044-35	ROTOR BLADE	6
● 5-1	JAI-1044-5-1	THROTTLE VALVE PIN	1	36	JAI-1044-36	CYLINDER	1
● 5-2	JAI-1044-5-2	THROTTLE VALVE	1	37	JAI-1044-37	FRONT END PLATE	1
6	JAI-1044-6	SPRING	1	38	JAI-1044-38	CYLINDER DOWEL	1
7	JAI-1044-7	EXHAUST DEFLECTOR	1	39	JAI-1044-39	BALL BEARING	1
8	JAI-1044-8	AIR INLET	1	40	JAI-1044-40	MOTOR CLAMP WASHER	2
12	JAI-1044-12	SCREW	1	41	JAI-1044-41	WASHER	1
13	JAI-1044-13	TRIGGER RETAINER	1	42	JAI-1044-42	HAMMER	2
★ 14	JAI-1044-14	TRIGGER ASSEMBLY (INCL.15)	1	43	JAI-1044-43	HAMMER FRAME	1
● 15	JAI-1044-15	TRIGGER PIN	1	★ 45	JAI-1044-45	STANDARD ANVIL(INCL.47.48)	1
16	JAI-1044-16	SPRING	2	● 47	JAI-1044-47	O-RING	1
17	JAI-1044-17	STEEL BALL	2	● 48	JAI-1044-48	SOCKET RETAINER	1
● 18	JAI-1044-18	GREASE FITTING	1	49	JAI-1044-49	GASKET	1
● 19	JAI-1044-19	GUIDE TUBE	1	50	JAI-1044-50	SEPARATOR	1
● 20	JAI-1044-20	REVERSE VALVE BUSHING	1	51	JAI-1044-51	BUSHING	1
21	JAI-1044-21	O-RING	1	52	JAI-1044-52	HAMMER CASE	1
22	JAI-1044-22	O-RING	1	53	JAI-1044-53	SCREW	4
23	JAI-1044-23	REVERSE VALVE	1	54	JAI-1044-54	MUFFLER ELEMENT	1
24	JAI-1044-24	RETAINER	1	55	JAI-1044-55	O-RING	1
25	JAI-1044-25	SCREW	2	RK	JAI-1044-RK	REPAIR KIT{ 4.5 (INCL.5-1.5-2).6.16(2) .17(2).21.22.26.30.31.32.35(6).39.47.48 .49.54.55 }	1
● 26	JAI-1044-26	O-RING	1				
27	JAI-1044-27	REVERSE VALVE KNOB	1				

★ MUST BE PURCHASED IN ASSEMBLY SET

● RECOMMENDED NOT TO BE PURCHASED ALONE DUE TO ASSEMBLY DIFFICULTY

MADE IN TAIWAN

2014A