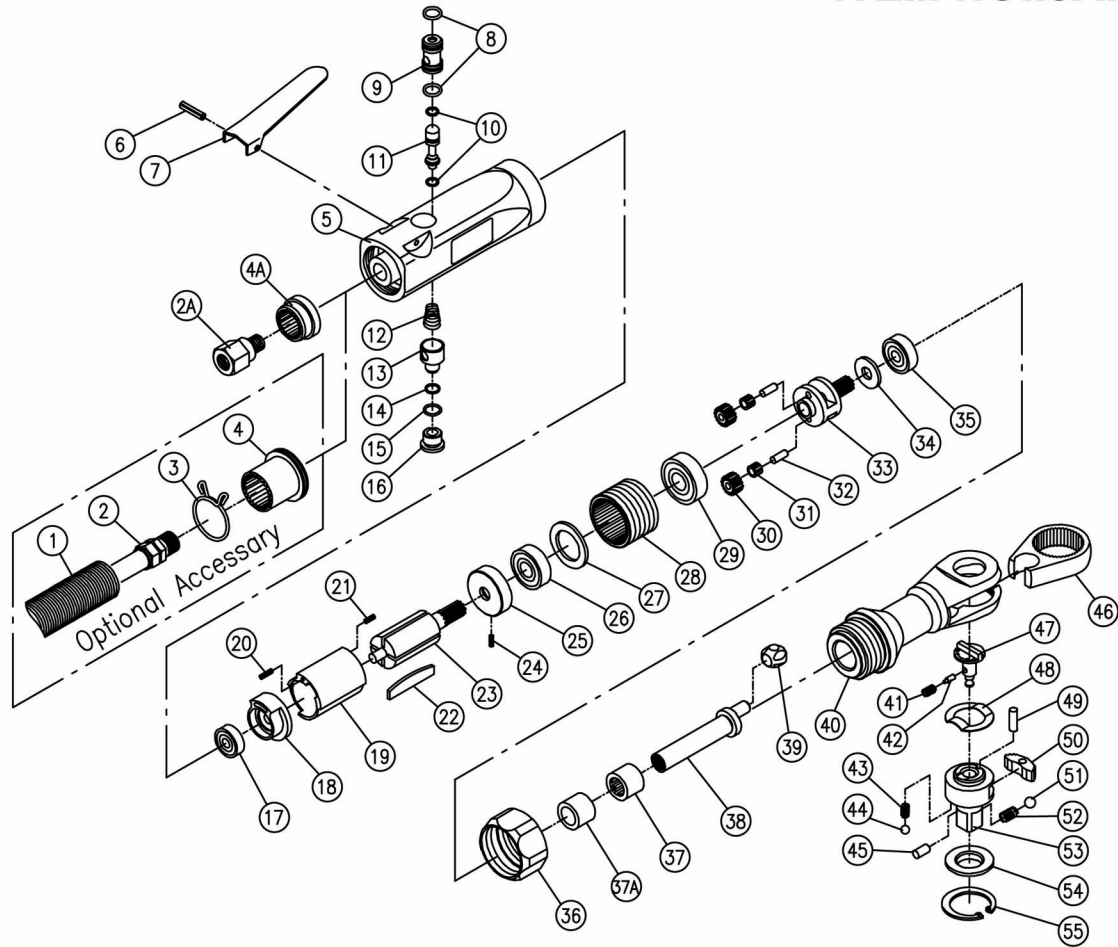


1/2" HEAVY DUTY AIR RATCHET WRENCH

ITEM NO.:JAR-6309A



NO.	PART NO.	DESCRIPTION	Q'TY	NO.	PART NO.	DESCRIPTION	Q'TY
1	JAR-6309A-1	EXHAUST HOSE	1	31	JAR-6309A-31	NEEDLE BEARING KT477	2
2	JAR-6309A-2	AIR INLET HOSE	1	32	JAR-6309A-32	PLANET PIN	2
3	JAR-6309A-3	CIRCLIP	1	33	JAR-6309A-33	PLANET CAGE	1
4	JAR-6309A-4	END CAP	1	34	JAR-6309A-34	WASHER	1
5	JAR-6309A-5	MOTOR HOUSING	1	35	JAR-6309A-35	BALL BEARING 608ZZ	1
6	JAR-6309A-6	LEVER PIN	1	36	JAR-6309A-36	CLAMP NUT	1
7	JAR-6309A-7	LEVER	1	37	JAR-6309A-37	NEEDLE BEARING 1212-HKQ	1
8	JAR-6309A-8	O-RING	2	37A	JAR-6309A-37A	BUSHING	1
9	JAR-6309A-9	VALVE BUSHING	1	38	JAR-6309A-38	CRANK SHAFT	1
10	JAR-6309A-10	O-RING	2	39	JAR-6309A-39	DRIVE BUSHING	1
11	JAR-6309A-11	VALVE STEM	1	40	JAR-6309A-40	RATCHET HOUSING	1
12	JAR-6309A-12	SPRING	1	41	JAR-6309A-41	SPRING	1
13	JAR-6309A-13	REFULATOR	1	42	JAR-6309A-42	LOCK PIN	1
14	JAR-6309A-14	O-RING	1	43	JAR-6309A-43	SPRING	2
15	JAR-6309A-15	O-RING	1	44	JAR-6309A-44	STEEL BALL	2
16	JAR-6309A-16	VALVE SCREW	1	45	JAR-6309A-45	PIN	1
17	JAR-6309A-17	BALL BEARING 626ZZ	5	46	JAR-6309A-46	YOKE	1
18	JAR-6309A-18	REAR END PLATE	1	47	JAR-6309A-47	REVERSE BUTTON	1
19	JAR-6309A-19	CYLINDER	1	48	JAR-6309A-48	WASHER	1
20	JAR-6309A-20	PIN	1	49	JAR-6309A-49	DOWEL PIN	1
21	JAR-6309A-21	SPRING PIN	1	50	JAR-6309A-50	RATCHET PAWL	1
22	JAR-6309A-22	ROTOR BLADE	5	51	JAR-6309A-51	STEEL BALL(ASSEMBLED WITH ANVIL)	1
23	JAR-6309A-23	ROTOR	1	52	JAR-6309A-52	SPRING(ASSEMBLED WITH ANVIL)	1
24	JAR-6309A-24	SPRING PIN	1	53	JAR-6309A-53	ANVIL	1
25	JAR-6309A-25	FRONT END PLATE	1	54	JAR-6309A-54	THRUST WASHER	1
26	JAR-6309A-26	BALL BEARING 608ZZ	1	55	JAR-6309A-55	RETAINING RING	1
27	JAR-6309A-27	WASHER	1	2A	JAR-6309A-2A	AIR INLET	1
28	JAR-6309A-28	INTERNAL GEAR	1	4A	JAR-6309A-4A	EXHAUST DELLECTOR	1
29	JAR-6309A-29	BALL BEARING 6001ZZ	1	RK	JAR-6309A-RK	REPAIR KIT	1
30	JAR-6309A-30	GEAR	2			{41.42.43(2).44(2).46.49.50.51.52.53}	